


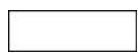





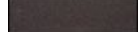
ART. 851/50

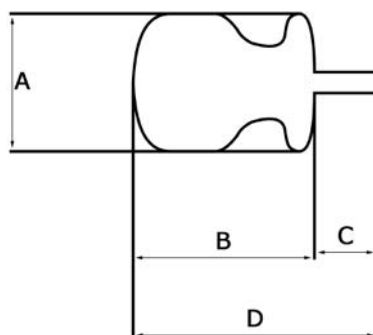


Revolving door knobs in stamped aluminium sheet with a thickness of 0,12mm and an expansion square (mm.8) spindle in galvanised steel.

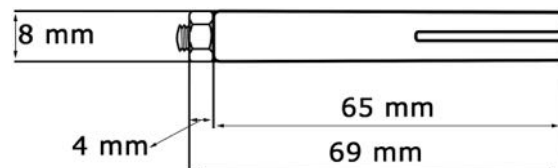
Powder coated aluminium

▪ Finishes:

	Black RAL 9005	code	Q
	White RAL 9010		T
	White RAL 1013		K
	Green RAL 6005		S
	Brown RAL 8017		U
	Antique gray		YA
	Antique green		SA
	Antique brown		UA



Expansion square spindle



ARTICLE	A	B	C	D
851/50	50	55	min : 24 max : 47	min : 79 max : 102

Measurements in mm.

Refer to the article 875/50 for the other specific measurement of the door knob.