

**ART. 230/60**

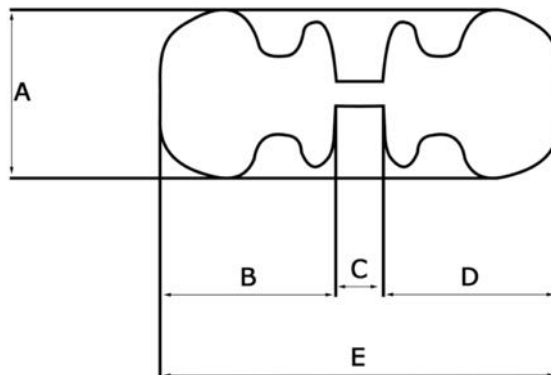


Revolving door knobs in stamped aluminium sheet with a thickness of 0,12mm and a square (mm.8) spindle in galvanised steel.

Anodized aluminium

▪ Finishes:

	Polished gold	code	<b>B</b>
	Satin gold		<b>F</b>
	Polished silver		<b>A</b>
	Satin silver		<b>E</b>
	Polished bronze		<b>C</b>
	Satin bronze		<b>G</b>
	Black electrocolour		<b>Z</b>
	Dark brown electrocolour		<b>I</b>



ARTICLE	A	B	C	D	E
230/60	60	52	min: 26 max: 72	52	min: 130 max: 176

Measurements in mm.

Refer to the article 172/60 for the other specific measurement of the door knob.